



**FOR SNOEZELEN**  
**Fluorescent Printing Designs**  
Revised in July 2016

## Fluorescent Print Sample

# Fluorescent Printing Design

JAN



DA-01



DA-02



DA-03

FEB



DA-04



DA-05



DA-06

MAR



DA-07



DA-08



DA-09

APR



DA-10



DA-11



DA-12

\*The color may differ slightly from the actual printing.

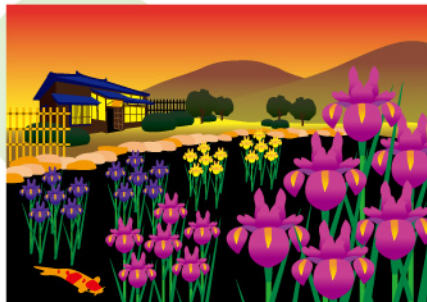


# Fluorescent Printing Design

MAY



DB-01



DB-02



DB-03

JUN



DB-04



DB-05



DB-06

JUL



DB-07



DB-08

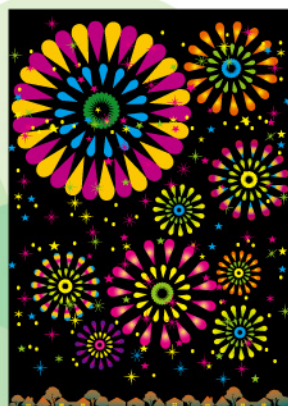


DB-09

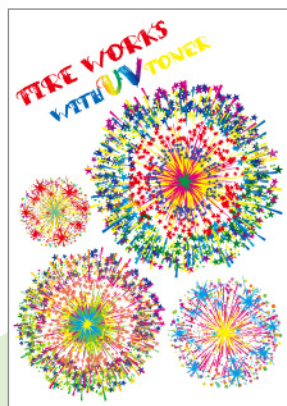
AUG



DB-10



DB-11



DB-12

\*The color may differ slightly from the actual printing.



# Fluorescent Printing Design

SEP



DC-01



DC-02



DC-03

OCT



DC-04



DC-05



DC-06

NOV



DC-07



DC-08



DC-09

DEC



DC-10



DC-11



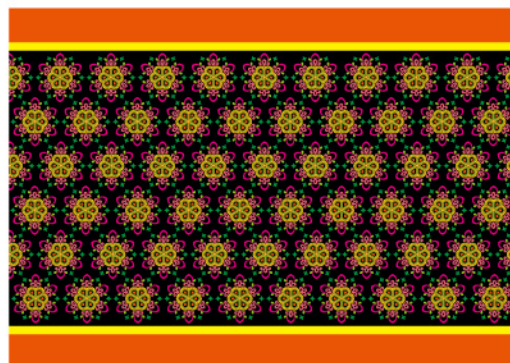
DC-12



# Fluorescent Printing Design



DD-01



DD-02 ★



DD-03 ★



DD-04 ★



DD-05



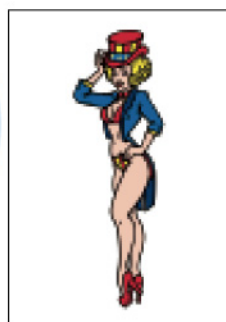
DD-09 ★



DD-06



DD-07

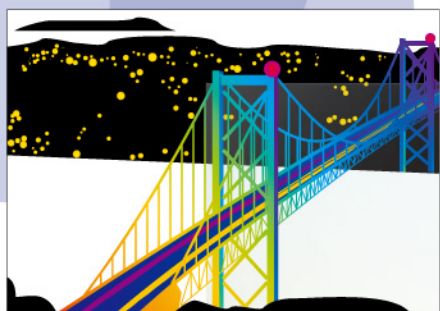


DD-08

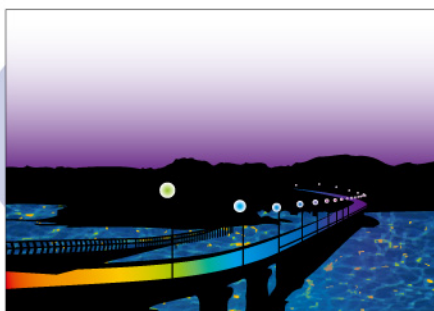
★  
Arranging DD-02 in line on the floor, you can enjoy the image effect, just like carpet.  
Laying DD-03 or DD-04 on the floor, it looks like a manhole cover.  
Putting some sheets of DD-09 on the wall, it can be imparting a special effect, like as stained glass in a church.

\*The color may differ slightly from the actual printing.

# Fluorescent Printing Design



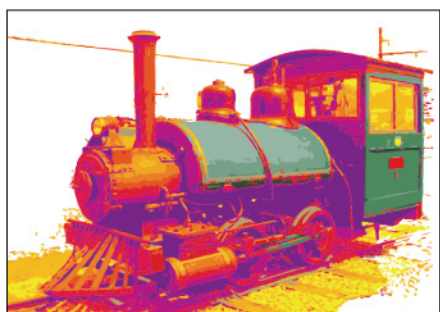
DE-01



DE-02



DE-03



DE-04



DE-06



DE-07



DE-05



DE-08



DE-09



DE-10



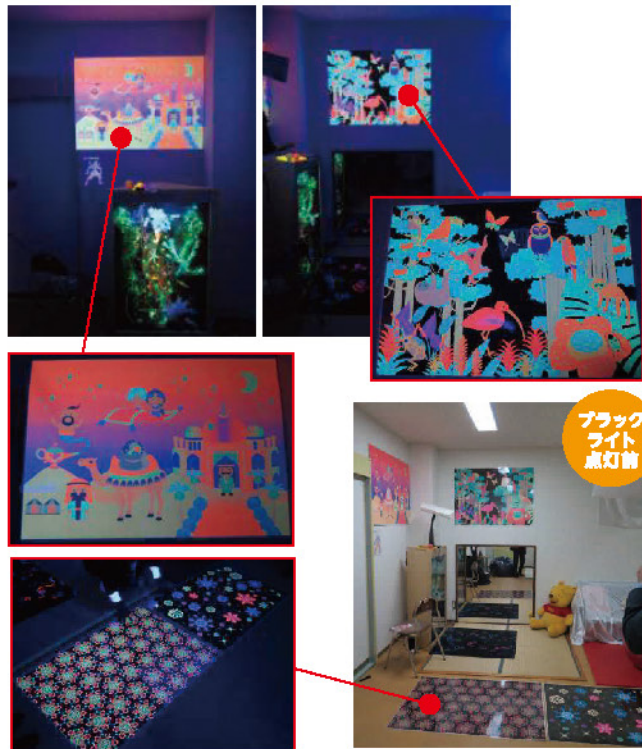
DE-11



# EXAMPLE OF EXHIBITION

## SNOEZELEN ROOM (Jan 2016)

National Research Institute for Special Support Education



## EXHIBITION ROOM

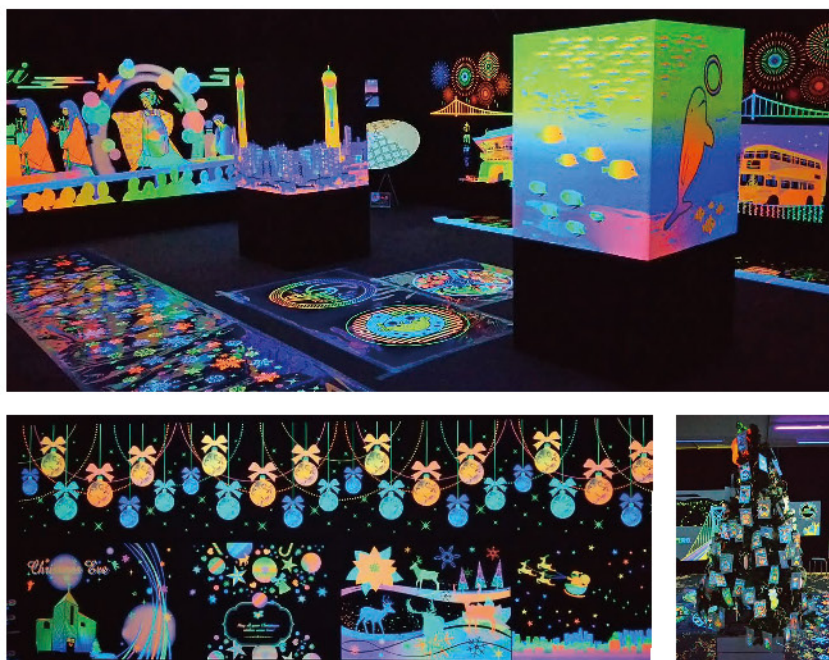
At the head office of Mikasa Sangyo Co., Ltd.

Please feel free to contact us if you would like to visit the room.



## 3D BLACK LIGHT ART EXHIBITION

"DAIMARU" Department Store, Shimonoseki (Dec 2015)



## LIGHTING ILLUSION EXHIBITION

"SOLOR" Youth Science Museum, Hofu (Aug-Sep 2015)



## 3D BLACK LIGHT ART EXHIBITION

"THE MALL SHUNAN" Shopping Center, Shunan (2015)

